



Prayed.

Planned.

Prepared.

**St. Paul Lutheran School Reopening Plans
2020 - 2021**

RETURN TO SCHOOL PLAN



"Trust in the lord forever, for the Lord God is an everlasting rock."

Isaiah 26:4

Dear St. Paul Families,

Our St. Paul Lutheran Church and School community has experienced an incredible amount of ups and downs during the COVID-19 pandemic. Throughout this difficult time, we have put our trust in our loving God, knowing He truly is our everlasting rock. He loves us, cares for us, and will guide us through any challenge we may face. Our Return to School Task Force has researched best practices, reviewed parent and staff surveys, consulted with Palm Beach County Health Department, reviewed national, state, and local guidelines, and worked with our Christian Day School Board. Collectively, we have prepared this plan for a safe return to school that meets the needs of both on and off campus learning and offers flexibility in learning models as conditions change. We have invested in all areas of campus to support our reopening learning plans, with a focus on technology in order to enhance our Off Campus Learning if a family chooses that plan, or if we are mandated to provide virtual learning only.

Our plan addresses the following areas:

- Face coverings and handwashing
- Health protocols and procedures
- Campus sanitizing
- Lunch/Water fountains
- Social distancing
- Learning Plans
- Frequently Asked Questions

Please know this plan may change as circumstances change. We will continue to make decisions based on the health and safety of our entire St. Paul community and our specific campus and conditions.

★ Please note that the start date of the school year has been changed to August 25th in order to completely prepare. Our staff will report back to work on August 3rd as originally scheduled. The plan the week of August 18th will include opportunities for our families to meet the teacher, explore the classroom, experience the changes in campus procedures, and have your questions answered. This will allow your family to have a smooth transition back to campus.

FACE COVERINGS AND HANDWASHING



IN ACCORDANCE WITH PALM BEACH COUNTY MANDATES
AND LOCAL REGULATIONS:

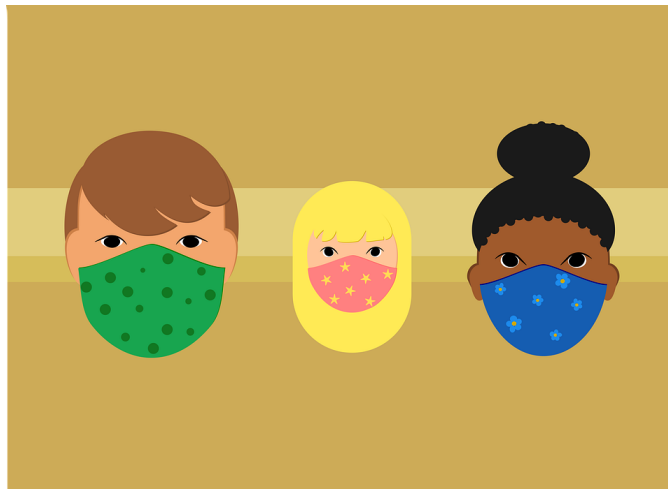
- All students and adults will be required to wear a face covering to limit the potential exposure and spread of the virus.
- Face coverings will not be required for students and staff during lunch, recess and other times when social distancing is possible.
- St. Paul reserves the right to change face covering procedures due to the fluid situation of community regulations.

Face covering guideline links below:

[PreK3 through 2nd Face Covering Guidelines](#)

[3rd through 8th Face Covering Guidelines](#)

- Frequent, proper, and monitored hand washing, and use of hand sanitizer whenever possible, will be expected throughout the day.



HEALTH PROTOCOLS AND PROCEDURES



- All people entering campus will be subject to daily temperature checks.
- Temperatures will be taken during morning arrival and again mid-day. St. Paul reserves the right to change temperature screening procedures as necessary.
- Anyone with a temperature above 100.4 F/38 C will be asked to leave the campus promptly.
 - ◆ In accordance with the Palm Beach County Department of Health, all temperatures over 100.4 F/38 C for three consecutive days will require a negative COVID -19 test to return to school.
- Parents will be asked to monitor their child's temperature and overall health on a daily basis. Please refer to the form provided to your family during home visits or located on cyberfalcon.com under parent forms.
- Do not send your child to school if a household family member tests positive for the COVID-19 virus or has flu-like symptoms. All individuals exposed to a confirmed case will need to quarantine for fourteen days per Palm Beach County. Distance learning will be offered for students quarantining.
- A return to school waiver will be required for each family along with our "regular" return to school paperwork. This waiver will be given to you during teacher visit.

COVID 19 Waiver link below:

[St. Paul Lutheran Church and School COVID - 19 Waiver](#)

- Do not send your child to school if they are exhibiting any of the following symptoms:
 - ◆ Temperature >100.4 F/38 C (without the use of fever reducing medication)
 - ◆ Vomiting
 - ◆ Diarrhea
 - ◆ Lost sense of taste/smell
 - ◆ Sore throat
 - ◆ Upper respiratory infection (coughing, sneezing, congestion)
 - ◆ Shortness of breath
 - ◆ Abnormal muscle pain
- In the event that a student or faculty member contracts the virus, our administration will work with the Palm Beach County Department of Health to safely determine the number of students and faculty members who have to be tested and enter quarantine.
- Lower student-teacher ratio or increased classroom space will be maintained to allow for social distancing to limit exposure to students and staff.
- Individual student materials - Classrooms will not use community supplies to avoid cross contamination.



CAMPUS SANITIZING



To ensure the highest level of cleanliness, St. Paul has increased sanitation methods throughout the campus.

Electrostatic Foggers

Electrostatic foggers will be used to clean classrooms and common areas at regularly scheduled intervals.

Sanitizing Stations

Hands free sanitizing stations, soap dispensers & paper towels will be strategically placed on campus.

High Traffic Areas

Frequent cleaning and disinfecting of restrooms and high traffic areas, with antiviral cleaning products, will be conducted by the custodial team, faculty and staff.

Classrooms

Staff will conduct sanitization of classrooms throughout the day, including toys and technology equipment.

Sanitizing Air Conditioners

Regularly sanitizing of air conditioning ducts on campus will be scheduled.

Playgrounds

Playground equipment will be cleaned by staff after each use with CDC approved sanitizer.

LUNCH/WATER FOUNTAINS



- All students must bring their own refillable water bottles.
- Water fountains will be covered, however fill stations for water bottles only will be available. Staff will monitor and sanitize after each use.
- Individual boxed hot or cold lunches will be provided by Daidone Dining.
- All lunches will be ordered online by parents. No paper lunch tickets will be issued. You will receive details from Daidone Dining.
- Lunch times will be staggered to accommodate social distancing guidelines.
- Outdoor seating will be available following social distancing guidelines. Teachers will limit the number of students at each table.
- Appropriate time will be allotted for mandatory hand washing prior to and after lunch.
- In the event of inclement weather, students will eat indoors following social distancing guidelines.



SOCIAL DISTANCING



Campus wide social distancing measures will be taken at St. Paul Lutheran. Staff will monitor this closely and adhere to the guidelines currently in place.

- Limit parents and visitors on campus
- No locker use until further notice to avoid crowding in hallways
- Clearly marked one way directions for campus movement
- Lower student-teacher ratio or increased classroom space will be maintained to allow for social distancing.
- Limiting student movement around campus; teachers will rotate to the students
- Maximize outdoor space for lunches and activities when possible
- No field trips until further notice
- Live stream chapel and large assemblies into classrooms
- Staggered drop off and pick up times for students:
 - ◆ **Middle School** - 7:35 - 7:45 a.m. & 2:50 - 3:00 p.m.
 - ◆ **Kindergarten - Fifth grade** - 7:45 - 8:00 a.m. & 2:40 - 2:50 p.m.
 - ◆ **PK3 - PK4** - 8:00 - 8:15 a.m. & 2:30 - 2:40 p.m.

Detailed procedures for drop off and pick up will be published prior to the opening of school.





Learning Plans

Our goal is to open school on August 25th, providing excellence in education, while maintaining a safe environment for our students, families and staff.

As this is a fluid situation, St. Paul is prepared to move between three learning plans based on the health and safety of our school community, current and local health recommendations and mandates, as well as guidance from our Florida-Georgia District office.

After reading through the plans, please click on the Learning Plan Selection Form Link below to choose the Learning Plan option for each of your children. This information will help in our planning, please complete by July 27th.

Plan 1- On Campus Learning



- Students will be on campus.
- This plan best reflects a typical school day, incorporating the use of teaching staff and aides to help execute a safe on campus experience.
- Classes and room assignments will be based on social distancing guidelines and current health and safety protocols.
- Specialty classes such as music, computers, etc. may be modified.
- Teachers will move to the students.
- No shared materials.
- Off Campus Learning will be available to students where there has been an exposure or diagnosis of COVID-19. ***Please see Plan 2 below.***

At the beginning of the 2020 -2021 school year, St. Paul will hold classes on campus. We understand families may prefer their children to stay at home for nine weeks (one quarter at a time). **Once a family opts into the Off Campus Learning option for the quarter, they will not be permitted to change to On Campus Learning for that quarter.**



Plan 2 - Off Campus Learning

- If families choose Off Campus Learning, **they must commit to this for at least nine weeks or the remainder of the current quarter.**
- Students will be required to follow the campus schedule and attend live classes available.
- Students will wear their school uniform to any live classes.
- Attendance will be taken as if students were on campus.
- This plan is dependent on parental support, and the ability to actively partner with your child's teacher.
- Parents will be responsible for picking up and/or dropping off work/assignments as arranged by the classroom teacher.
- If you choose Off Campus Learning your child's seat in the classroom is not in jeopardy.

[Learning Plan Selection Form](#) - **Please complete by July 27th**



Plan 3 - Virtual Learning (Campus Closed)

In the event St. Paul is mandated to close our campus, we are prepared to seamlessly move to virtual instruction. We learned a great deal about virtual instruction during the last quarter of the 2019-2020 school year. Teachers have participated in, and will continue in professional development opportunities that will enhance virtual learning. This information, along with feedback from our staff and parent surveys, will improve the virtual learning during the 2020-2021 school year. Our focus will be on the following:

- Instruction shifts to core subjects and a modified schedule.
- Teachers will provide both live and recorded teaching sessions.
- Improved consistency in areas of:
 - ◆ instruction
 - ◆ grading/homework
 - ◆ communication
 - ◆ attendance
- Additional support will be available for struggling learners.





Frequently Asked Questions (FAQs)

Can a face covering be worn, even if it's not mandated, at different times during the school year? *Yes, at any time during the year a child may wear an approved face covering if they choose.*

Will there be recess? *Yes, children will participate in regular scheduled recess. Times and locations will be staggered to allow for social distancing.*

Will there be aftercare available? *At this time, aftercare will only be available for those families who register for full time aftercare.*

Will St. Paul have extracurricular activities? *Decisions will be made according to local guidelines and participation by other schools and organizations. Every effort will be explored to offer safe participation in extracurricular activities.*

Will there still be home visits? *St. Paul values the importance of home visits/teacher visits as an opportunity to build the partnership between home and school. It will look different this year, but we will set aside time to meet with each student and parent(s) prior to the start of the school year.*

What will classrooms look like physically? *As much as possible, the physical environment will be structured to adhere to social distancing guidelines.*

What will arrival and dismissal look like? *Due to the current situation, and trying to maintain proper staff to student ratios, we are not able to offer early arrival at this time. Student drop-off will be staggered to promote social distancing. Dismissal will be similar to our current Rain Day Dismissal procedures.*

Can I walk my child to their classroom at drop off? *It will depend on the grade level. Specific details on procedures for drop off, pick up and temperature screening will be published prior to school opening.*

Can parents come to campus and volunteer? *Unfortunately, visitors will be limited until further notice.*

Will the school have a policy addressing travel during the school year? *St. Paul expects families to adhere to federal and state guidelines on travel. [Considerations for Travelers—Coronavirus in the US](#)*

What will security look like? *Security remains a top priority at St. Paul. Our security officer and a Boca Raton police officer will be on campus daily.*

What happens if there is a positive COVID 19 case at St. Paul? *Palm Beach County Health Department will be notified, and we will follow the protocols they have in place for a confirmed case.*

If a member of our St. Paul community has a temperature, do they have to get tested for Covid? *Anyone with a temperature above 100.4 F/38C will be asked to leave campus. In accordance with the Palm Beach County Department of Health, all temperatures over 100.4 F/38C for three consecutive days will require a negative COVID -19 test to return to school. Please remember we take these protocols seriously for the health of our students, staff, families, and community.*

How can your family support St. Paul in these plans? *As a community, we need to partner together and trust we are all following the best practices outside of St. Paul, such as social distancing, wearing face coverings in public, limiting social group gatherings, and keeping students home when they are sick. We also ask for your prayers and patience as we strive to create the safest environment. This is a fluid situation, and our plans may change if and when necessary.*